

---

BEAUTY MASK

OVE

THE POWER OF LIGHT

---

Lucibel·le

PARIS

*Middle East*

THE BEAUTY OVE MASK BY  
LUCIBEL.LE PARIS:  
BORN OUT OF A  
REVOLUTIONARY COMBINATION  
OF CUTTING-EDGE  
TECHNOLOGY AND DESIGN TO  
DELIVER UNRIVALLED BEAUTY.

The result of an unprecedented partnership with designer Olivier Lapidus, its light pioneers a new path to beauty. The technology of the beauty **OVE** mask capitalizes on skin regeneration through LED photobiomodulation.

Red LED light, a source of beauty and wellness, boosts the synthesis of collagen, elastin and hyaluronic acid, giving the skin a replenishing, smoothing and invigorating effect.

To benefit fully from the **OVE** Mask's features and to avoid any damage linked to improper usage, carefully read the instructions prior to use.

---

**The new era of  
beauty through  
light**

# 3

**P5** SAFETY INSTRUCTIONS

**P6** CONTRAINDICATIONS

**P8** HANDLING THE  
BEAUTY MASK

**P10** OPERATING THE  
BEAUTY MASK

**P11** DIRECTIONS FOR USE  
AND MAINTENANCE

**P12** TECHNICAL  
SPECIFICATIONS

**P13** WARRANTY

# The power of light

---

## CONTENTS OF THE BOX

---

- ✓ **OVE** beauty mask
- ✓ A pair of protective goggles
- ✓ User guide

# SAFETY INSTRUCTIONS

To avoid any risk of electrocution, fire, electric shock or injury, please follow the following safety measures:

# 5

**WARNING:** Do not look directly into LEDs while in operation. You must wear the goggles provided due to the intense light.

**Check** that the network voltage is in accordance with the range indicated on the power supply of the **OVE** beauty mask (100-240 VAC).

**Plug** the mask into a wall socket which meets electrical specifications.

**Do not use** the **OVE** beauty mask under running water, while taking a bath or in the shower.

**Never use** the beauty mask with a damaged cord and/or power supply.

**Do not use** the beauty mask if the timer is faulty or if the inner pane of the mask is broken or has been removed.

**Do not place** the mask on a damp surface or close to a bathtub, shower or basin.

**Use** the **OVE** beauty mask in a dry place and avoid any sprayed water.

If the **OVE** beauty mask falls in water: **do not touch it** and immediately disconnect the power.

**Do not use** the beauty mask under a cover or in a similar environment. Excessive heat could be emitted and cause a fire, an electric shock or bodily harm.

Only carry and move the OVE beauty mask by holding the base. Never lift by the flexible cable.

**Do not shake** or drop the **OVE** beauty mask.

**Do not leave** the **OVE** beauty mask unattended when it is turned on and plugged in.

**Do not remove** the serial number located beneath the mask base.

**Do not open** or dismantle the **OVE** beauty mask. Maintenance must only be carried out by the manufacturer in order to avoid any danger.

**In the case of hire of the mask by a third party**, the instructions for use must be provided.

**WARNING :** Do not stare directly into the emitter.

It is necessary to wear the glasses provided because of the light intensity. These goggles must be worn during the entire duration of the photobiomodulation sessions.

Cleaning and user maintenance shall not be made by children without supervision.

The **OVE** mask is designed for use on the face. In the event of improper handling, in particular for use of the face mask other than on the face, the legal guarantee of conformity shall not apply.

## CONTRAINDICATIONS

---

The **OVE** beauty mask is suitable for all skin types.

**However, its use is not recommended for:**

- Pregnant women
- People suffering from telangiectasia and photo-dermatosis
- People with birth marks
- People who suffer from or who may suffer from epileptic fits
- Children

**This appliance** must not be used by individuals with impaired physical, sensory or mental capacities, or those lacking experience and knowledge of the appliance's use and its potential risks.

What's more, use of the **OVE** beauty mask is not recommended for people undergoing treatment with photosensitizing medications or people being treated for a disease which results in photo-sensitivity.

Pre-existing skin conditions cannot be attributed to exposure to the mask's red light.

If undesirable side effects are observed, such as itching within 48 hours of initial use, please ask your doctor prior to reusing the appliance.

Use of red light does not interfere with anti-cancer treatments.

If in doubt, the user should ask a doctor.

---

7

**Frown lines**

Muscle relaxing effect

**Crow's feet, wrinkles and fine lines**

Smoothing thin skin in the eye area

**Skin pores**

Visible reduction of their diameter

**Face oval**

Skin toning

**Forehead wrinkles**

Skin replenishment and well-being effect

**Eyelids**

Skin replenishment

**Skin**

Reduction in sebum levels

**Naso-labial folds**

Skin replenishment

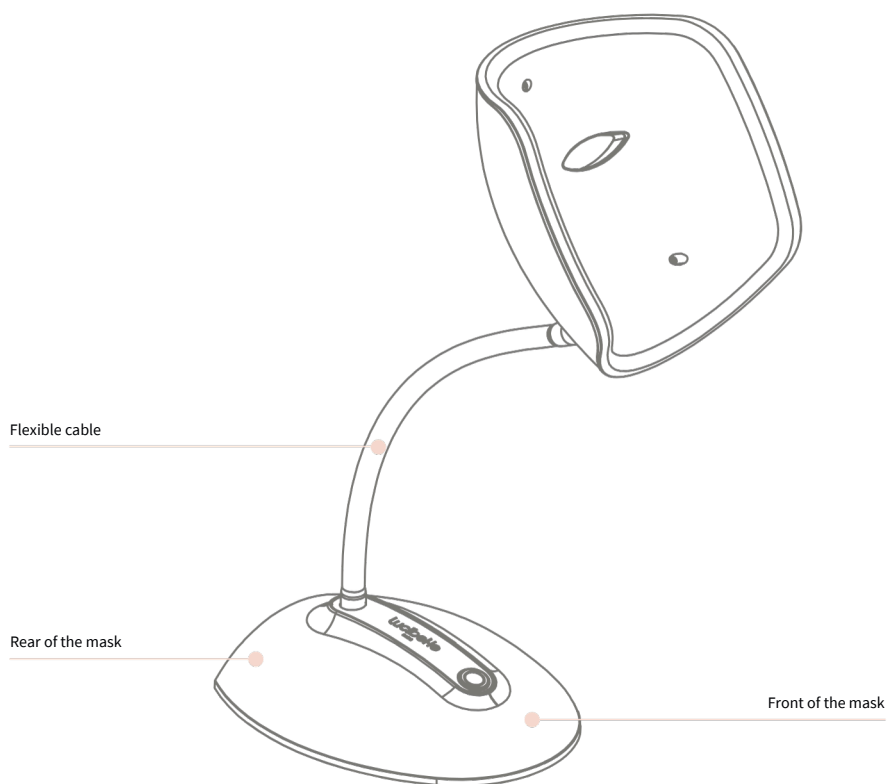
**Mouth**

Skin hydration

Thanks to the LED light intensity, specific to every area of the face, the beauty mask offers unparalleled performance for visible results.

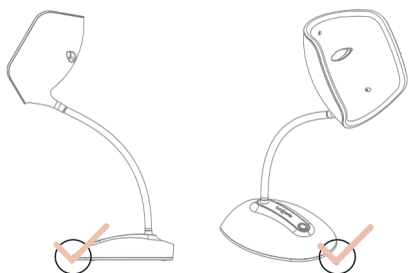
# HANDLING THE BEAUTY MASK

Advice for simple and efficient use of  
the **OVE** beauty mask.

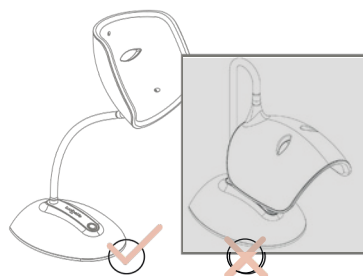




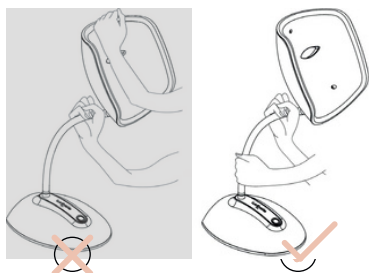
## 9



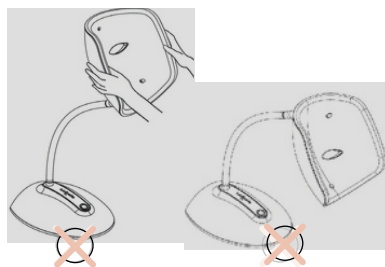
**Always turn the mask the right way around in relation to the base.** The light emitting area of the beauty mask must always be facing the front of the base. To keep the mask facing the right way with regard to the base, rotate the flexible cable.



**Ensure not to over-bend the cable,** as you may risk damaging or knocking over the mask.



**To adjust the height of the mask,** always handle the flexible cable using both hands.



**The beauty mask can only be used as indicated with the top facing upward.** Do not rotate: the mask upside down using the flexible cable.

## OPERATING THE BEAUTY MASK

**Place** the mask on a flat, stable surface and plug it into a power outlet (for optimal and safe use, we do not recommend using a socket strip).

**Adjust** the protective goggles on the face so that the eyes are fully protected during photobiomodulation sessions.

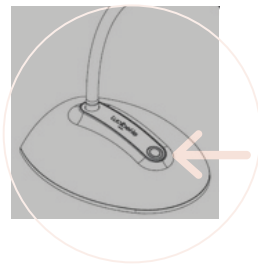
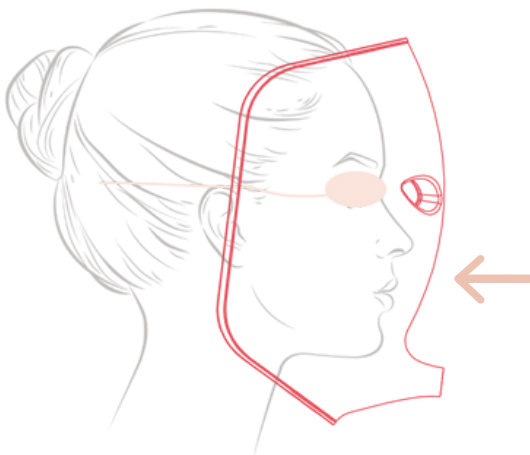
**Place** the face inside the mask. The nose must touch the wall. If needed, adjust the position of the mask by moving the flexible cable.

**Press** the button once (short press) to turn the beauty mask on.

The session is programmed to last for **12 minutes**, alternating between flashes and steady light .

After the session, the mask turns off automatically. To turn off the mask during a session, hold the Power button down for 3 seconds.

**After use**, disconnect the mask from the power supply.



## DIRECTIONS FOR USE

**Cleanse the skin** prior to use to optimize light absorption.

Set 72-hours **intervals between sessions** - the time needed for the skin to absorb the light energy.

Do not use the **OVE** face mask for longer than the recommended time.

Optimal effects are observed after 24 sessions on average. To benefit from the **“delayed effect”**, take a 1-2 month break before resuming sessions. During this “down time”, the skin will continue to be improved.

**Only use electronic accessories supplied by Lucibel.le Paris. Do not plug third-party accessories into the jack socket.**

Avoid applying any make-up products prior to the session.

Finally, for an accurate self-assessment of the beauty mask's results, take a **“day zero” photo** of the treated areas prior to starting the protocol, a second **photo after 16 sessions** and a third **photo after 24 sessions**.

If the beauty mask is used consecutively by several people, keep it switched off for at least 5 minutes between uses.

This mask is designed to be used in up to five sessions per day. Excessive use could result in damage to the beauty mask.

## 11

### Maintaining the beauty mask

Clean the beauty mask after each use using wipes soaked in an antibacterial solution.

Refrain from using detergents, solvents, chemical products and abrasive sponges.



### Environmental safeguards

The beauty mask may not be treated as household waste: when disposed of, it must be brought to a designated collection point for the recycling of electric and electronic equipment, to help preserve natural resources.

# TECHNICAL SPECIFICATIONS

Technical specifications of the **OVE** beauty mask - a real marvel of technology - exalting every kind of beauty.

Operating temperature	0 °C to +35 °C +32 °F to +95 °F
Maximum service life	50,000 hours
Materials	Casing: PC, ABS Flexible cable: PVC, Brass Base: Steel Screws and bolts: Zinc-plated steel Dissipator: Aluminum
Weight	3.64 kg
Dimensions	W 213 mm x L 396 mm x H 611 mm
Number of LEDs	40
Electrical input characteristics	100/240 V ~ 50/60 Hz
Wavelength	635 nm
Power	40 W
Jack socket	Reserved for Lucibel.le Paris accessories

# WARRANTY

13

**The Company guarantees the compliance of Lucibel.le Paris Products with the Company's specifications and all state French, European, and applicable technical standards of each country where its products are marketed.**

All Products for sale benefit from the legal guarantee of conformity (articles L.217-4-3 and following of the French Consumer Code) and the guarantee against hidden defects (articles 1641 and 1644 of the Civil Code), allowing the Customer to return defective or non-compliant delivered Products.

The products sold must be in accordance with the contract and free from non-conformity defects upon delivery.

The seller is also responsible for non-conformity defects resulting from the packaging, instructions for assembly or installation when it has been assigned by the contract or carried out under his responsibility, or when the incorrect installation, carried out by the consumer as stipulated in the contract, is due to deficiencies or errors in the installation instructions provided by the seller.

In accordance with Article L. 217-4 of the Consumer Code, the good is in conformity with the contract if it meets in particular, where applicable, the following criteria: · It must correspond to the description, type, quantity, and quality, in particular concerning functionality, compatibility, interoperability, any other characteristics provided for in the contract; · It is suitable for any special use intended by the consumer, brought to the attention of the seller no later than at the time of the conclusion of the contract and which the seller has accepted;

- It is delivered with all accessories and installation instructions, to be provided in accordance with the contract;
- It is updated in accordance with the contract.

In accordance with Article L. 217-5 of the Consumer Code, in addition to the conformity criteria set out in the contract, the Product is deemed to be in conformity if it meets the following criteria:

- It is fit for the usual purpose of goods of the same type, taking into account, if applicable, any provisions of European Union law and national law as well as all technical standards or, in the absence of such technical standards, specific codes of conduct applicable to the relevant sector;
- Where applicable, it has the qualities that the seller has presented to the consumer in the form of a sample or model before the conclusion of the contract;
- Where applicable, any digital elements it contains are provided in the most recent version available at the time of contract conclusion, unless otherwise agreed by the parties;
- Where applicable, it is supplied with all accessories, including packaging, and installation instructions that the consumer can reasonably expect.

If applicable, the product comes with the updates that the consumer can legitimately expect, in accordance with the provisions of Article L. 217-19;

However, the Company is not bound by any of the public statements mentioned above if it demonstrates:

1. That it was unaware of them and could not reasonably have been aware of them;
2. That at the time of the contract conclusion, the public statements had been corrected under conditions comparable to the initial statements;
3. Or that the public statements could not have influenced the purchase decision.

**Any operational defect resulting from a design, material, or manufacturing flaw** entitles the Product to be exchanged or repaired, after examination of the Product to be recognized as defective by the Company.

This warranty applies only for the direct benefit of the end consumer (the Customer).

Wheels, power supply cables, and external body damage (including normal wear & tear from use) are not included into the warranty.

The warranty does not cover defects that are established to have resulted from non-compliance with the instructions for use or maintenance provided by the Company and outlined in the user guide.

Likewise, the warranty does not cover defects that are established to originate from negligence, an external cause unrelated to the Product such as improper electrical installation, lack of maintenance, lack of supervision, a fire, water damage, sand or liquid intrusions, improper storage, abnormal use, use in a humid or outdoor environment, a fall.

The warranty also does not apply in case of use of parts or accessories not manufactured by the Company, in case of alteration or removal of the batch number affixed in the factory, in case of assembly, disassembly, intervention or modification carried out by a third party not authorized by the Company.

---

**To benefit from the warranty**, the Customer must notify the Company at the email address [contact@lucibelleparis.ae](mailto:contact@lucibelleparis.ae) of any defects attributed to the Product as soon as such defects occur, by providing:

- A detailed description of the attributed defect(s);
- The serial number of the Product and its conditions of use;
- Proof of purchase.

The Company will process the warranty claim and notify the Customer.

Upon receipt of the notification from the Company authorizing the return, the Customer must send the product to the Return Address: **STI Innovations L.L.C, Warehouse 2, Marabea Street, Al Quoz 1, Dubai, UAE** (the complete Product, in its original packaging), and refrain from making any repairs themselves.

An unauthorized return may be refused by the Company.

The return shipment costs are the responsibility of the Customer.

In the event of a defect recognized by the Company under this warranty, the Company will, at its discretion, replace the defective Product(s) or exchange the defective material or parts with products of at least equivalent performance. In this case, the costs associated with the reshipment of the replaced / repaired Product back to the Customer will be covered by the Company.

Any other liability or compensation is excluded. In the event of a Product replacement under this warranty, the replaced Product is itself guaranteed but only for the remaining duration of the original warranty. Under no circumstances shall the Company be held liable for direct, indirect, special, incidental, or consequential damages (including loss of profit) resulting from the use of the Product not in accordance with this user guide or for purposes other than those for which the Product was intended. In accordance with the regulations, this warranty is only applicable to the end consumer (the Customer).

# SUPPORT

## I HAVE A PROBLEM. WHO TO CONTACT?

In case of difficulties using the OVE MINI, first check that the instructions described in this guide have been followed. Ensure that the OVE MINI is properly connected to the power outlet / socket.

If the above has been followed & checked, and the malfunction persists, please contact us by email at the following address:

**[contact@lucibelleparis.ae](mailto:contact@lucibelleparis.ae)**

You can also reach us via the following number:

**+971 56 115 9343**

For safety reasons, do not try to disassemble the OVE MINI yourself. If the device has been taken apart or modified, the warranty will no longer be valid.

## REACH OUT TO US FOR PERSONALIZED ADVICE

Purchased the OVE Mask directly on the website?

Not yet in contact with one of our lumino-dermatologists?

Lucibel.le Paris has a dedicated team of beauty professionals to advise you about our technology & products.

To get in touch with us, you are welcome to visit our website

**[www.lucibelleparis.ae](http://www.lucibelleparis.ae)** and fill in the Contact Us form at the bottom of the page.

---

BEAUTY MASK

OVE

THE POWER OF LIGHT

---

Lucibel·le

PARIS

*Middle East*

OF09-586, Arabian Sky Business Center, CitiBank Building, Umm Hurair 2, Dubai

[www.lucibel·leparis.ae](http://www.lucibel·leparis.ae)



NB-0009

STI INNOVATIONS LIGHTING EQUIPMENT TRADING L.L.C - Main License 1257482 Register No. 2130823 DET DUBAI

